



PRODUCTION PROGRAMME

Producer of industrial valves and fittings

3-piece ball valves



1-piece ball valves



3-way ball valves



heated ball valves

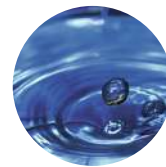


ball valves with actuators



teflon-lined ball valves





Producer of industrial valves and fittings

The Production-Services-Trade Company ANDREX has been acting on the market since 1985. The main production profile of the company are the ball valves made from the ordinary and acid resistant steels which are manufactured in different types and executions.

The offered teflon-lined ball valves and other teflon-lined valves and fittings are manufactured by the company CINKARNA Slovenia. The gate valves, globe valves, check valves and butterfly valves are manufactured by the company ARMATURY GROUP Czech Republic. The steam traps which also in our offer are manufactured by the company GESTRA Polonia.

We have at our disposal very experienced crew and are able to execute also non-standard orders on the basis of the client's project or to prepare technical solutions which will satisfy all our clients, even if there are required only a few pieces.

Our products are widely used in the chemical, oil, gas, heating, pharmaceutical, food and other industries.

The experience achieved during design and production process of our fittings let us prepare unique solutions which have been registered in the Polish Patent Office.

The high quality of our products confirm the obtained certificates, attestations, approvals and admittances.

Moreover, we offer such services as: zinc plating, blacking, technical chromium plating and electropolishing of acid resistant steels.

Certificates



CE Certificate



ISO 9001 Certificate



FIRE SAFE Certificate



Hygienic attestation of PZH



Qualifications of Transport Technical Supervision



Certificate π



Qualifications of Military Technical Supervision



Certificate for the Russian market

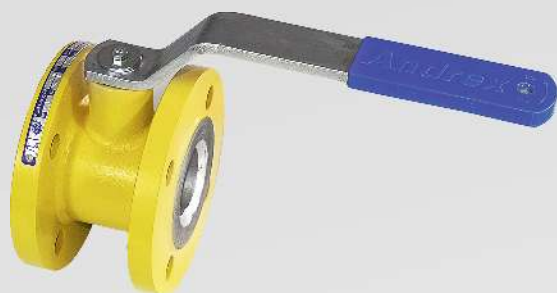
Flanged & interflanged ball valves



DP-3k, DP-31k
DP-3kC, DP-31kC



DP-2k
DP-25k



DP-21k



DP-22k
DP-23k
DP-24kC



DP-1k
DP-1kC

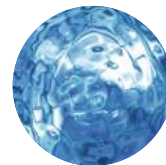


DP-1kS



Standard	PN-EN, DIN, ANSI, ASME
Diameters	DN6 ÷ 1000, NPS1/4" ÷ 40"
Pressure	PN6 ÷ 150, CLASS150 ÷ 900
Temperature	-196°C ÷ +400°C
Material	Carbon steel 1.0038, 1.0254, 1.0562 (P355) Acid resistant steel 1.4301, 1.4541, 1.4571 and others 1.4539, 1.4404, 1.4931, 1.4462, 2.4602 (C22)

Internal & external threaded ball valves



DP-3gw, DP-3gwC



DP-1gw, DP-1gwC



DP-1gwS, DP-1gwSC



Standard	PN-EN, DIN, ANSI, ASME
Diameters	DN6 ÷ 100, NPS1/4" ÷ 4"
Pressure	PN6 ÷ 150, CLASS150 ÷ 900
Temperature	-196°C ÷ +400°C
Material	Carbon steel 1.0038, 1.0254, 1.0562 (P355) Acid resistant steel 1.4301, 1.4541, 1.4571 and others 1.4539, 1.4404, 1.4931, 1.4462, 2.4602 (C22)

Ball valves for welding



DP-3p, DP-31p



DP-1p

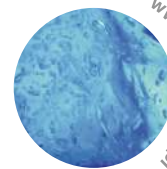


DP-1pS, DP-44pC



Standard	PN-EN, DIN, ANSI, ASME
Diameters	DN6 ÷ 1000, NPS1/4" ÷ 40"
Pressure	PN6 ÷ 150, CLASS150 ÷ 900
Temperature	-100°C ÷ +400°C
Material	Carbon steel 1.0038, 1.0254, 1.0562 (P355) Acid resistant steel 1.4301, 1.4541, 1.4571 and others 1.4539, 1.4404, 1.4931, 1.4462, 2.4602 (C22)

Three-way ball valves



www.andrex.com



DP-5gw, DP-5gwC
threaded



DP-5k, DP-5kC
flanged

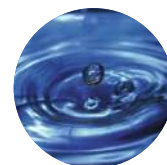


DP-5p
for welding



Standard	PN-EN, DIN, ANSI, ASME
Diameters	DN10 ÷ 250, NPS3/8" ÷ 10"
Pressure	PN6 ÷ 40, CLASS150 ÷ 300
Temperature	-196°C ÷ +250°C
Material	Carbon steel 1.0038, 1.0254, 1.0562 (P355) Acid resistant steel 1.4301, 1.4541, 1.4571 and others 1.4539, 1.4404, 1.4931, 1.4462, 2.4602 (C22)
Ball	Type "L" or "T"

Three-way heated ball valves



www.andrex.com



DP-10gw, DP-10gwC
threaded



DP-10k, DP-10kC
flanged



DP-10p
for welding



Standard	PN-EN, DIN, ANSI, ASME
Diameters	DN15 ÷ 250, NPS1/2" ÷ 10"
Pressure	PN6 ÷ 40, CLASS150 ÷ 300
Temperature	-50°C ÷ +250°C
Material	Carbon steel 1.0038, 1.025, 1.0562 (P355) Acid resistant steel 1.4301, 1.4541, 1.4571 and others 1.4539, 1.4404, 1.4931, 1.4462, 2.4602 (C22)
Heating	On body or on all building length

• Three-way heated ball valves



DP-9gw, DP-9gwC
threaded



DP-9k, DP-9kC
flanged



DP-9p
for welding



Standard	PN-EN, DIN, ANSI, ASME
Diameters	DN15 ÷ 250, NPS1/2" ÷ 10"
Pressure	PN6 ÷ 40, CLASS150 ÷ 300
Temperature	-50°C ÷ +250°C
Material	Carbon steel 1.0038, 1.0254, 1.0562 (P355) Acid resistant steel 1.4301, 1.4541, 1.4571 and others 1.4539, 1.4404, 1.4931, 1.4462, 2.4602 (C22)
Heating	On body or all building length

• Ball valves with gearbox



All ball valves from our offer can be provided with gearboxes

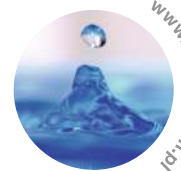


with worm gearbox



with worm gearbox and limit switch

Ball valves with pneumatic driver



with single acting pneumatic drive and limit switch



with single acting pneumatic drive, solenoid valve and limit switch



with single acting pneumatic drive, solenoid valve, limit switch and worm gearbox



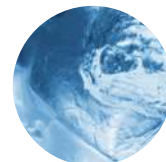
with double acting pneumatic drive and positioner

Ball valves with electric driver

All ball valves from our offer can be provided with electric drives



• Ball valves with limit switch



All ball valves from our offer can be provided with limit switches



• Ball valves with column



All ball valves from our offer can be provided with columns



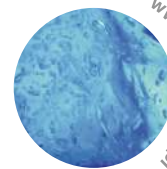
• Ball valves with saling & padlocking option



All ball valves from our offer can be provided with sealing option



Manometer ball valves



www.andrex.com.pl

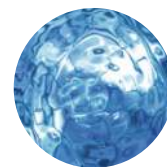


DP-1gwS-m, DP-1gwS-mC



Standard	PN-EN, DIN, ANSI, ASME
Diameters	m1 ÷ m9
Pressure	PN6-150, CLASS150-900
Temperature	-50°C ÷ +250°C
Material	Carbon steel 1.0038, 1.0254, 1.0562 (P355) Acid resistant steel 1.4301, 1.4541, 1.4571 and others 1.4539, 1.4404, 1.4931, 1.4462, 2.4602 (C22)

Ball valves for tanks



www.andrex.com.pl



DP-8g
for tank cars
threaded



DP-8p
for tank cars
for welding



DP-13
for tank cars



DP-14
for tank cars
aluminium



DP-14k
for tank cars
flanged, aluminium



Standard	PN-EN
Diameters	DN10 ÷ DN50, DN80, DN100,
Pressure	PN6 ÷ 16
Temperature	-30°C ÷ +150°C
Material	Aluminium 3.1325 (PA6, AK11)

Ball valves for tanks



DP-3kgz

for tanks, acid resistant



DP-20

ventilation valve,
for railway tanks



DP-15

for railway tanks,
aluminium



Standard	PN-EN
Diameters	DN80, DN100, DN125
Pressure	PN6 ÷ 16
Temperature	-50°C ÷ +250°C
Material	Carbon steel 1.0038, 1.0254 Acid resistant steel 1.4301, 1.4541, 1.4571, Aluminium 3.1325 (PA6, AK11)

Non-standard ball valves



DP-1sz

fast connecting



DP-2/3k

flanged with special
building length



DP-3sz

fast connecting



DP-1ks/gws

flanged/internal threaded



DP-1w

drain off with
outlet for hose



DP-3k/p

flanged/for welding

Moreover, our company manufactures ball valves in the following connection executions:

- drain off with straight outlet
- drain off with angled outlet
- flanged / internal threaded
- flanged / external threaded
- flanged / for welding
- internal threaded / flanged
- internal threaded / external threaded
- internal threaded / for welding

- extremal threaded / internal threaded
- extremal threaded / flanged
- extremal threaded / for welding
- for welding / flanged
- for welding / internal threaded
- for welding / extremal threaded

Teflon-lined flanged ball valves



www.andrex.com.pl
td@andrex.com.pl



DP-303k

Standard	PN-EN, ANSI
Diameters	DN15 ÷ DN100, NPS1/2" ÷ NPS4"
Pressure	PN6 ÷ PN16
Temperature	-30°C ÷ +250°C
Material	FEP or PFA lined carbon steel PTFE or ceramic ball

Teflon-lined butterfly valves of wafer type



DP-310

Standard	PN-EN, ANSI
Diameters	DN50 ÷ DN250, NPS2" ÷ NPS10"
Pressure	PN6 ÷ PN16
Temperature	-30°C ÷ +250°C
Material	FEP or PFA or EPDM lined carbon steel FEP or PFA or EPDM lined disc 1.4571

Diaphragm flanged valves



DP-320k

Standard	PN-EN, ANSI
Diameters	DN15 ÷ DN200, NPS1/2" ÷ NPS8"
Pressure	PN6 ÷ PN16
Temperature	-30°C ÷ +250°C
Material	EPDM lined carbon steel EPDM or EPDM + PTFE diaphragm

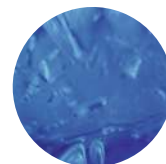
Teflon-lined flanged check valves



DP-330k

Standard	PN-EN, ANSI
Diameters	DN15 ÷ DN100, NPS1/2" ÷ NPS4"
Pressure	PN6 ÷ PN16
Temperature	-30°C ÷ +250°C
Material	FEP or PFA lined carbon steel PTFE ball

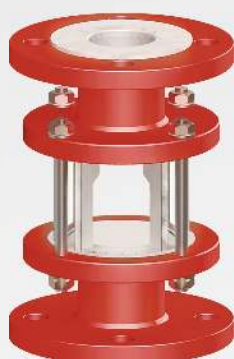
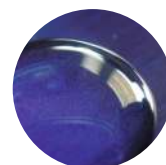
Teflon-lined: pipes, t-joints, elbows, reduction fittings & banking flanges



DP-350

Standard	PN-EN, ANSI
Diameters	DN15 ÷ DN200, NPS1/2" ÷ NPS8"
Pressure	PN6 ÷ PN16
Temperature	-30°C ÷ +250°C
Material	PTFE lined carbon steel

Teflon-lined flanged flow through sight glasses



PZD-340k

Standard	PN-EN, ANSI
Diameters	DN15 ÷ DN100, NPS1/2" ÷ NPS4"
Pressure	PN6 ÷ PN16
Temperature	-30°C ÷ +250°C
Material	FEP or PFA lined carbon steel

Flanged sight glasses



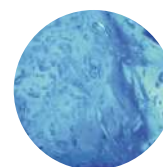
www.andrex.com



PZD, PZDC

Standard	PN-EN, ANSI
Diameters	DN15 ÷ DN250, NPS1/2" ÷ NPS10"
Pressure	PN6 ÷ PN40, CLASS150 ÷ 300
Temperature	-50°C ÷ +250°C
Material	Carbon steel 1.0038, 1.0254, 1.0562 (P355) Acid resistand steel 1.4301, 1.4541, 1.4571 and others 1.4539, 1.4408, 1.4931, 1.4462, 2.4602 (C22)

Flanged globe valves



www.andrex.com



DP-218-V30

Standard	PN-EN, ANSI
Diameters	DN15 ÷ DN200, NPS1/2" ÷ NPS10"
Pressure	PN6 ÷ PN100, CLASS150 ÷ 900
Temperature	-30°C ÷ +450°C
Material	Carbon steel 1.0619 Acid resistand steel 1.7357

Flanged gate valves



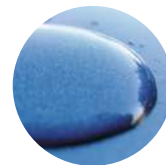
www.andrex.com



DP-055-S33
DP-043-S10

Standard	PN-EN, ANSI
Diameters	DN50 ÷ DN600, NPS2" ÷ NPS24"
Pressure	PN6 ÷ PN100, CLASS150 ÷ 900
Temperature	-30°C ÷ +450°C
Material	Carbon steel 1.0619 Acid resistand steel 1.7357

Centric butterfly valves of wafer type



DP-L32.5

Standard	PN-EN,
Diameters	DN50 ÷ DN600, NPS2" ÷ NPS24"
Pressure	PN6 ÷ PN16, CLASS150 ÷ 900
Temperature	-20°C ÷ +130°C
Material	Carbon steel 0.6025 Disc 1.4301

Eccentric butterfly valves flanged & luger type



DP-L32.6(7,8)

Standard	PN-EN, ANSI
Diameters	DN200 ÷ DN2000, NPS8" ÷ NPS80"
Pressure	PN6 ÷ PN16, CLASS150 ÷ 300
Temperature	-30°C ÷ +400°C
Material	Carbon steel 1.0570, 1.0566 Acid resistant steel 1.4541

Check valves



DP-L10, DP-L01

Standard	PN-EN, ANSI
Diameters	DN40 ÷ DN800, NPS1 1/2" ÷ NPS32"
Pressure	PN6 ÷ PN40, CLASS150 ÷ 300
Temperature	-30°C ÷ +250°C
Material	Carbon steel 1.0570, 1.0566 Acid resistant steel 1.4541



Flanged steam traps



DP-BK



DP-MK



Standard	PN-EN, DIN, ANSI
Diameters	DN15 ÷ DN50, NPS3/8" ÷ NPS2"
Pressure	PN6 ÷ PN630
Temperature	-30°C ÷ +580°C
Material	Carbon steel, alloy steel 1.0460, 1.4903 Acid resistant steel 1.4301, 1.4404, 1.4408

Services



zinc plating



electropolishing of acid resistant steels



chromium plating



blackening



PPUH „ANDREX” Andrzej Dąbrowski
Zakład Pracy Chronionej

BRZYŚCIE 35 k/Mielca
39-307 Gawłuszowice

tel.: 17 785-28-93, 785-28-94, 773-12-11
698 609 809
fax: 17 785-28-95, 785-28-96

andrex@andrex.com.pl

www.andrex.com.pl

zawory zaporowe



zawory zwrotne



zasuw



zawory zwrotne teflonowane



przepustnice centryczne



przezierniki i wzierniki



przepustnice mimośrodowe



przezierniki teflonowane



przepustnice teflonowane



rury i kształtki teflonowane



zawory membranowe



odwadniacze





PROGRAM PRODUKCJI

Producent armatury przemysłowej



kurki kulowe trzyczęściowe



kurki kulowe jednoczęściowe



kurki kulowe trójdrogowe



kurki kulowe ogrzewane



kurki kulowe ze sterowaniem



kurki kulowe teflonowane



PPUH „ANDREX” Andrzej Dąbrowski
Zakład Pracy Chronionej

BRZYŚCIE 35 k/Mielca
39-307 Gawłuszowice

tel.: 17 785-28-93, 785-28-94, 773-12-11
698 609 809
fax: 17 785-28-95, 785-28-96

andrex@andrex.com.pl

www.andrex.com.pl

globe valves



check valves



gate valves



teflon-lined check valves



centric butterfly valves



sight glasses



eccentric butterfly valves



teflon - lined sight glasses



teflon - lined butterfly valves



teflon - lined pipes and fittings



diaphragm valves



steam traps

